

1 **SMOOTH STUCCO FINISH**
DRYVIT - SLIM
FINESSE 310ST CHINA WHITE



2 **SMOOTH STUCCO FINISH**
DRYVIT - SLIM
FINESSE 105ST SUEDE



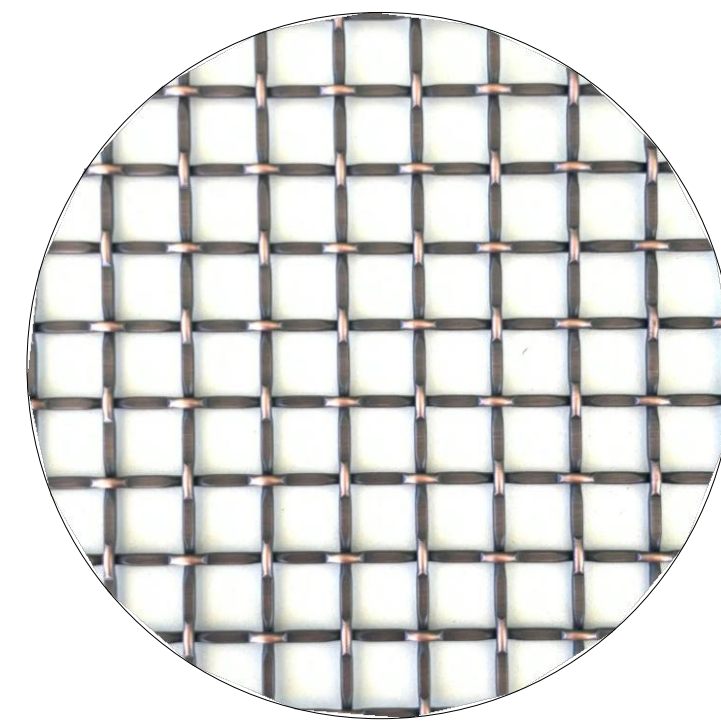
3 **WOOD-POLYPROPYLENE COMPOSITE**
KNOTWOOD - FRENCH WALNUT



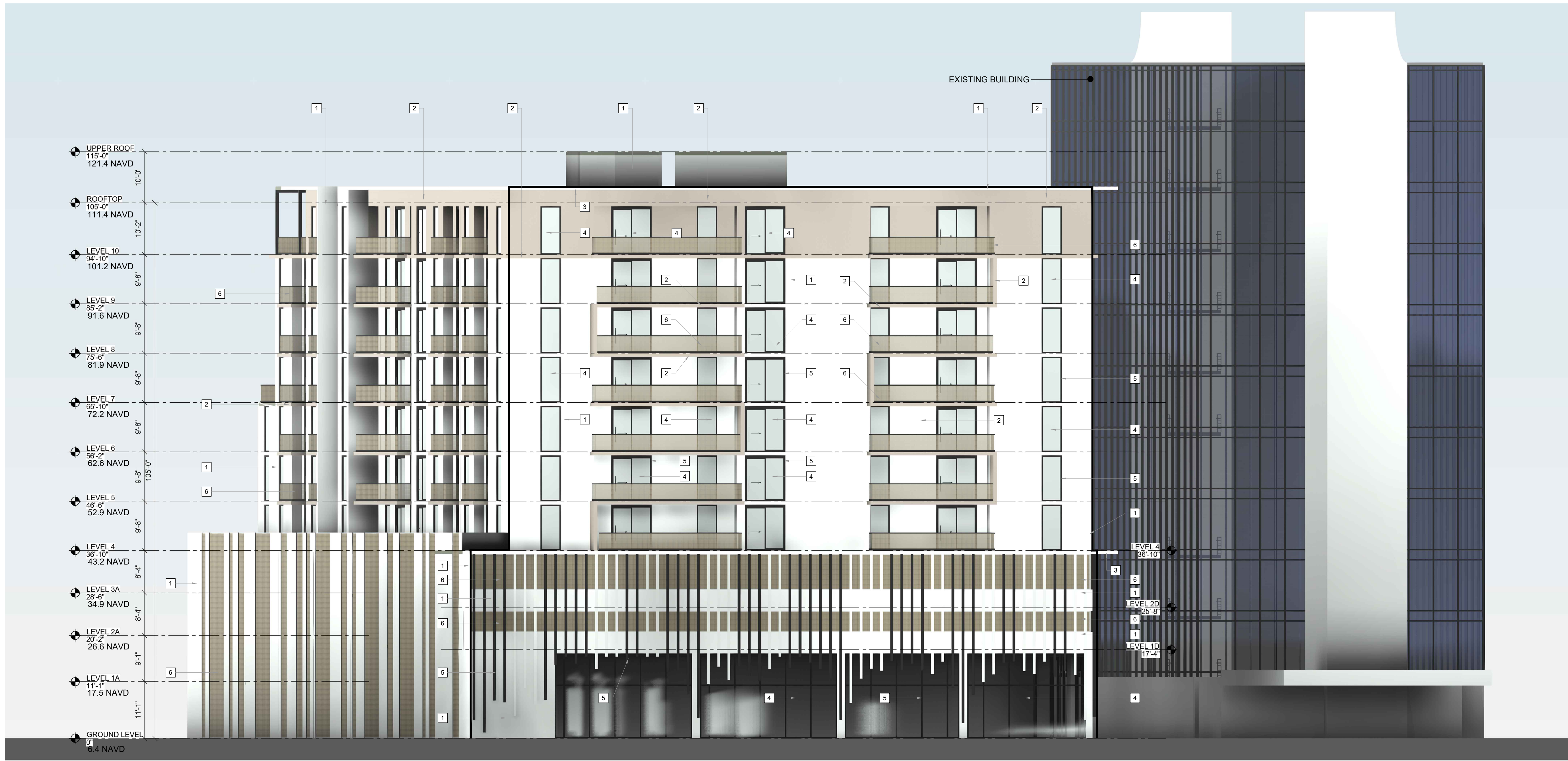
4 **TINTED GLASS FOR STOREFRONTS,**
WINDOWS, BALCONY DOORS
VIRACON - 9/16" VLE24
- 47 LAMINATED HS/HS



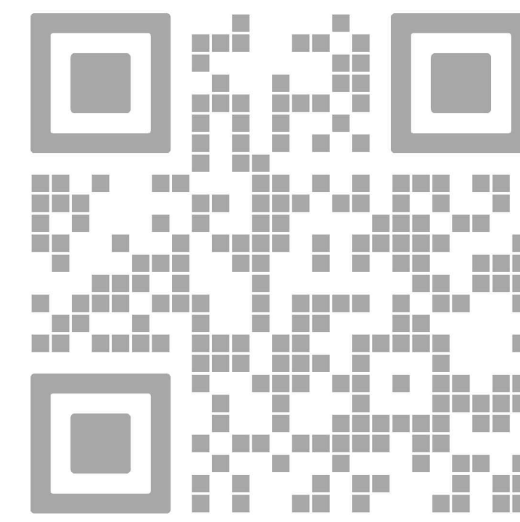
5 **ALUMINUM FRAME**
FOR STOREFRONTS & WINDOW
BENJAMIN MOORE
2134-30 IRON MOUNTAIN



6 **METAL MESH RAILING**
& PARKING GARAGE SCREENING
BRUSHED OIL BRONZE



01 WEST ELEVATION
A-503 SCALE: 1/4" = 4'-0"



REV.	DATE	DESCRIPTION
01	05-13-2025	DRC SUBMITTAL

ALL MEASUREMENTS MUST BE VERIFIED BEFORE
BEGINNING THE WORKS. NO MEASUREMENTS ARE TO
BE SCALED DIRECTLY FROM THIS DRAWING.

Key section

Client
VERA FUND
NICK POLYUSHKIN
& YURI KHARITONENKOV
TEL: 305.833.3303

Project
1600 S FEDERAL HIGHWAY
(MIXED-USE PROJECT)
1600 SOUTH FEDERAL HIGHWAY,
POMPAHO BEACH, FL 33062

Title
WEST ELEVATION

Drawn
J. WU
Verified
N. TREMBLAY
Approved
S. L'ECUYER
Date
08-15-2025

Project
PZ24-12000027
11/19/2025
Dwg. no.
A-503